



▲
GISMAN
▼

THE RANGE OF MOORING BUOYS

CONTENT

1

BENEFITS

- Cost-effective
- Environment-friendly
- Versatile

2

DESIGN / MANUFACTURING

- Normative Referential
- Floats
- Structure
- Option
- Mooring link
- Anchoring

3

RANGE

- MB-1250
- MB-1400-0.7 & 1.5
- MB-2000
- MB-2500
- MB-3000

BENEFITS

Extend harbours facilities into deep water
Reduce the impact on marine environment



- **Safe and cost-effective**
 - No need to extend quayside facilities
 - Temporary or permanent
 - Low maintenance

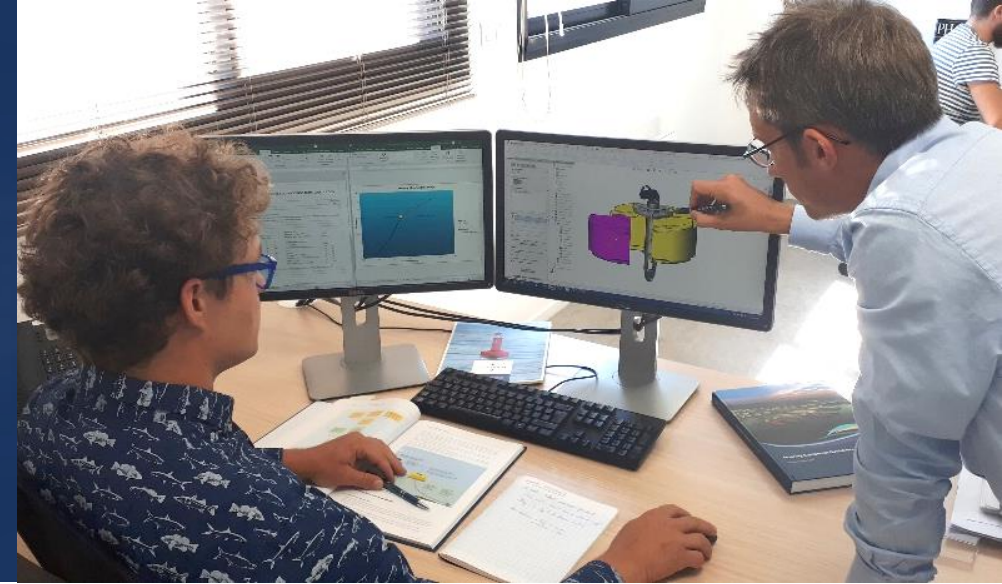
- **Environment-friendly**
 - No hard construction
 - No need for dredging
 - No need for using anchors

- **Versatile**
 - All types of ships
 - All types of site conditions
 - Single Point Mooring (SPM) or Multi Buoy Mooring (MBM)



DESIGN / MANUFACTURING

Compliant with International Rules,
Recommendations, Standards and Practices



ANCHORING AND MOORING CALCULATIONS

DNVGL-OS-E301 : Position Mooring

DNVGL-OTG-18 : Guidance for long term nearshore mooring systems

DNVGL-RP-C205 : Environmental conditions and environmental loads

API RP 2SK : Design and analysis of Stationkeeping Systems for Floating Structures

STRUCTURE CALCULATION

Custom design with dedicated CAD

Validation of mechanical performance using a finite element calculation tool

Mechanical tests on a traction bench

DESIGN / MANUFACTURING

Incorporates the latest technology



POLYETHYLENE FLOAT

Precompounded Low Density Polyethylene

Stabilisation UV and high quality pigments to avoid colour fading

Foaming with high density Expanded Polystyrene (EPS) or Polyurethane (PU)

MOORING BUOYS STRUCTURE

Validation of mechanical performance on a traction bench

Approved anti-corrosion protection systems (galvanisation, painting, anodes)

LESS MAINTENANCE

No corrosion on plastic parts

LOWER WEIGHT THAN STEEL OR ELASTOMER

Less logistical and lifting resources

ENVIRONNEMENT-FRIENDLY

Polyethylene is fully recyclable

No anti-fouling coating

Longer service intervals

MODULARITY

Easy transportation and storage

Easy to repair

DESIGN / MANUFACTURING

Option



OPTIONAL EQUIPMENT

Footsteps

Marking

Identification

Retro-reflective stripes

LED lanterns

MOORING LINKS

D-Link

Static-T

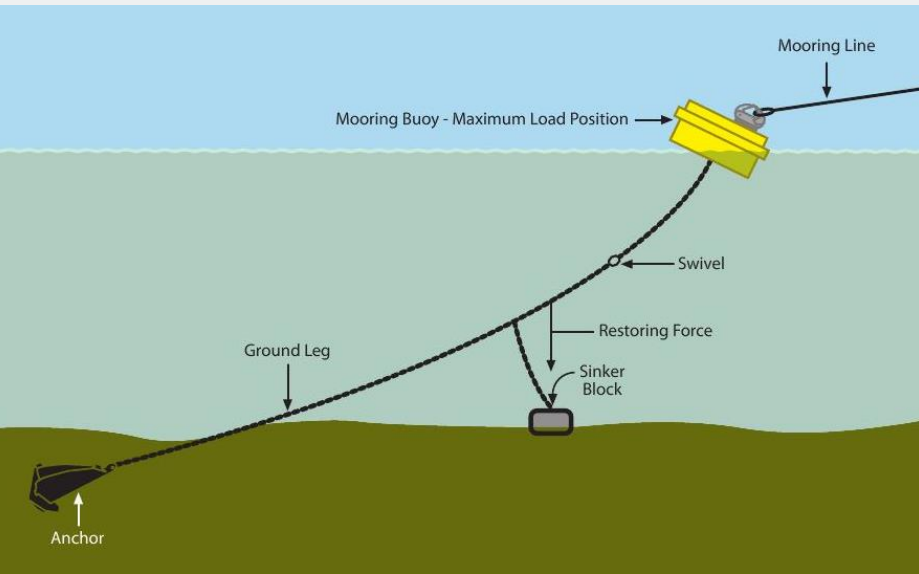
S-Shackle

CT- Chain Through

Pelican Hook(s)

RELATED DESIGN

Anchoring



TEXTILE, HYBRID AND CHAIN ANCHORING LINES

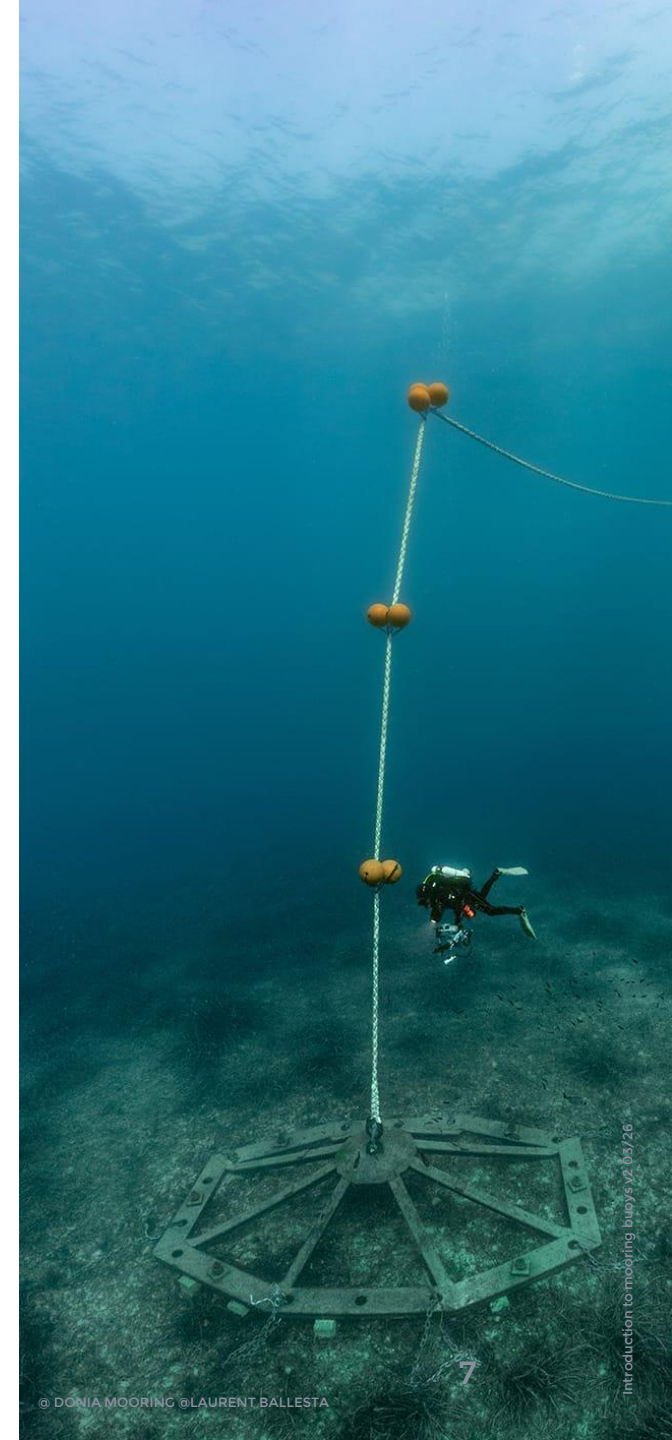
- Chains with or without studlink tested on a traction bench
- Textile anchoring lines and floats subsurface
- Dampers to withstand peak loads

SINKERS

- Concrete
- Concrete and Magnetite
- Cast Iron

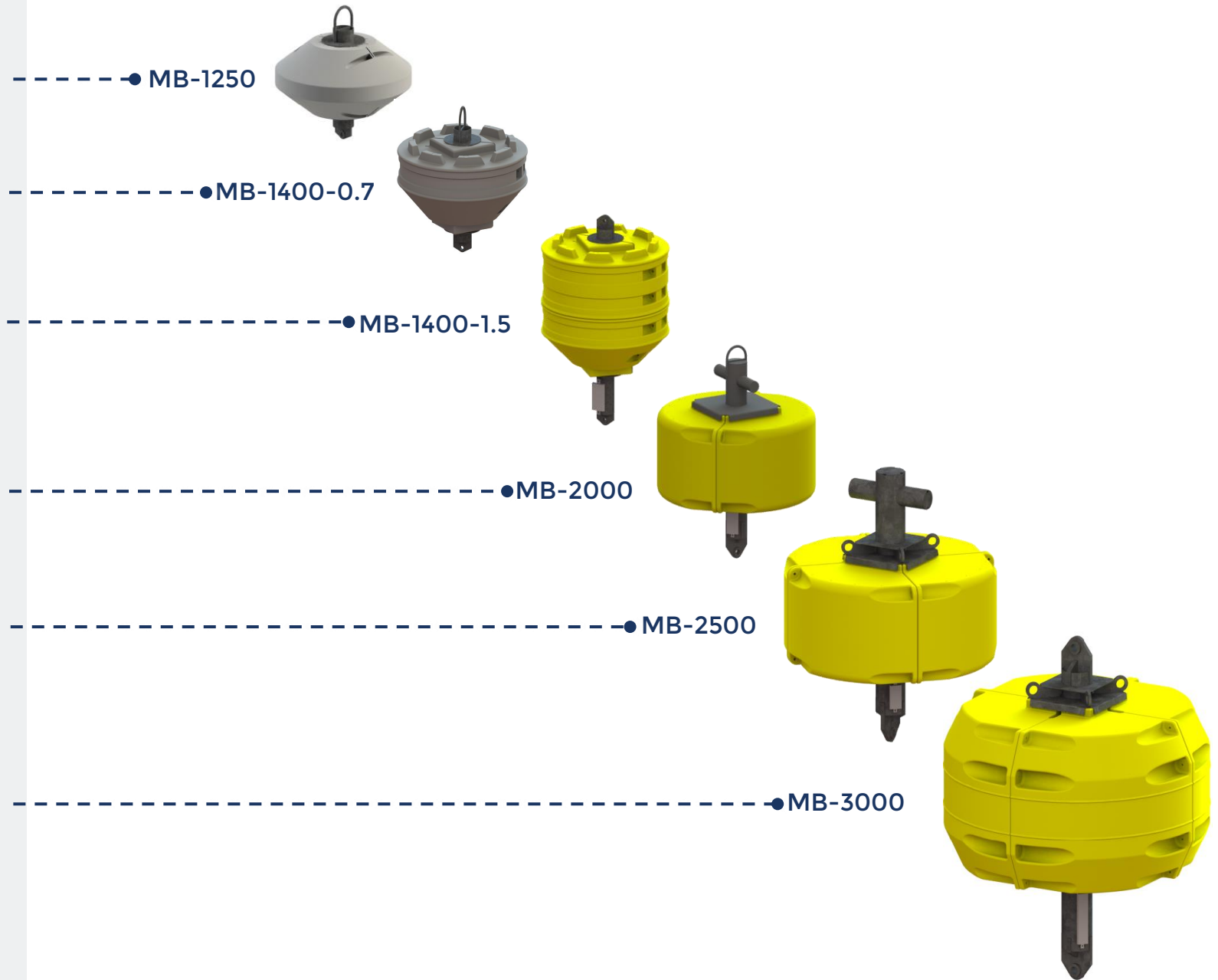
EMBEDDING OR SCREW-TYPE CERTIFIED ANCHORS

- HHP AC-14
- Flipper Delta
- Danforth
- Stevpris ...



RANGE OF MOORING BUOYS

Diam. from 1250 to 3000mm
SWL from 5.5 to 150t



MB-1250

SWL from 5.5 to 15t

YACHTING
HARBOUR

Diameter (m)	1.25
Net Buoyancy (kg)	350
Volume (m ³)	0.4
SWL (t)	5.5 to 15
Mooring Links	D, Shackle, Chain Through, T
Option	EPS or PU foaming Enhanced SWL



MB-1400-0.7
SWL from 5.5 to 15t

YACHTING
HARBOUR

Diameter (m)	1.4
Net Buoyancy (kg)	600
Volume (m ³)	0.7
SWL (t)	5.5 to 15
Mooring Links	D, Shackle, Chain Through, T
Option	EPS or PU foaming Enhanced SWL Hand rail



MB-1400-1.5

SWL from 5.5 to 15t

WORKBOAT
LARGE YACHT
HARBOUR

Diameter (m)	1.4
Net Buoyancy (kg)	1250
Volume (m ³)	1.5
SWL (t)	5.5 to 15
Mooring Links	D, Shackle, Chain Through, T
Option	EPS or PU foaming Enhanced SWL Hand rail

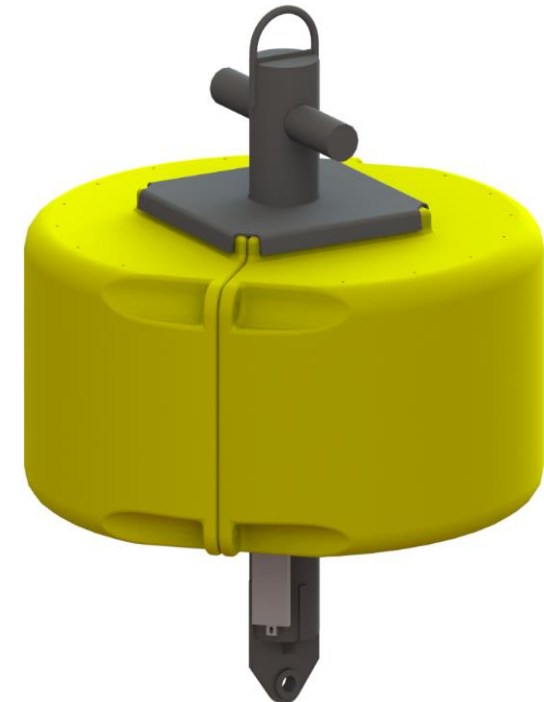


MB-2000

SWL from 7.8 to 80t

WORKBOAT
LARGE YACHT
HARBOUR

Diameter (m)	2.0
Net Buoyancy (kg)	2650
Volume (m ³)	3.1
SWL (t)	7.8 to 80
Mooring Links	D, Shackle, Chain Through, T
Option	EPS or PU foaming Enhanced SWL Hand rail Rubber fender LED lantern



MB-2500

SWL from 17 to 150t

WORKBOAT
LARGE YACHT
HARBOUR

Diameter (m)	2.5
Net Buoyancy (kg)	4250
Volume (m ³)	5.25
SWL (t)	17 to 150
Mooring Links	D, Shackle, Chain Through, T
Option	EPS or PU foaming Enhanced SWL Hand rail Rubber fender LED lantern



MB-3000

SWL from 17 to 150t

Available in 3 distinct volumes

WORKBOAT
LARGE YACHT
HARBOUR

Diameter (m)	3.0
Net Buoyancy (kg)	6500 / 8700 / 10700
Volume (m ³)	7.5 / 10 / 12
SWL (t)	17 to 150
Mooring Links	D, Shackle, Chain Through, T
Option	EPS or PU foaming Enhanced SWL Hand rail Rubber fender LED lantern



GISMAN, SINCE 1862.

close to 500 customers in 80 countries

1

Implementation of major historic lighthouses and light stations on all continents.

2

Acknowledged as a pioneering designer and manufacturer of modular plastic navigational buoys in the early 1990s.

3

Market introduction of its own range of marine lanterns and applications suite for monitoring and maintenance in 2022.



Quality Management System approved to standards ISO 9001:2015.



IALA was established in 1957. GISMAN is member since 1966.



Your contact

Vincent ROGET

Sales Director

+33 (0)2 97 29 41 21

vincent.roget@gisman.fr

