



**OUR EXPERTISE  
AT YOUR SERVICE**

# GISMAN, SINCE 1862.

IALA industrial member since 1966

1

Implementation of major historic lighthouses and light stations on all continents.

2

Acknowledged as a pioneering designer and manufacturer of modular plastic navigational buoys in the early 1990s.

3

Market introduction of its own range of marine lanterns and applications suite for monitoring and maintenance in 2022.



Industrial member since 1966.



Quality Management System approved ISO 9001:2015.



-----• **« Ensuring the safety of mariners and preserving a fragile maritime environment »**

Helping implement and maintain a maritime or river beaconing system in accordance with international recommendations.

Offering safe and cost-effective mooring solutions to extend your harbour facilities into deep water.

Designing floating devices capable of integrating your environmental measurement and monitoring devices >>



# SERVICING THE MARINE INDUSTRY

Close to 500 customers  
In 80 countries

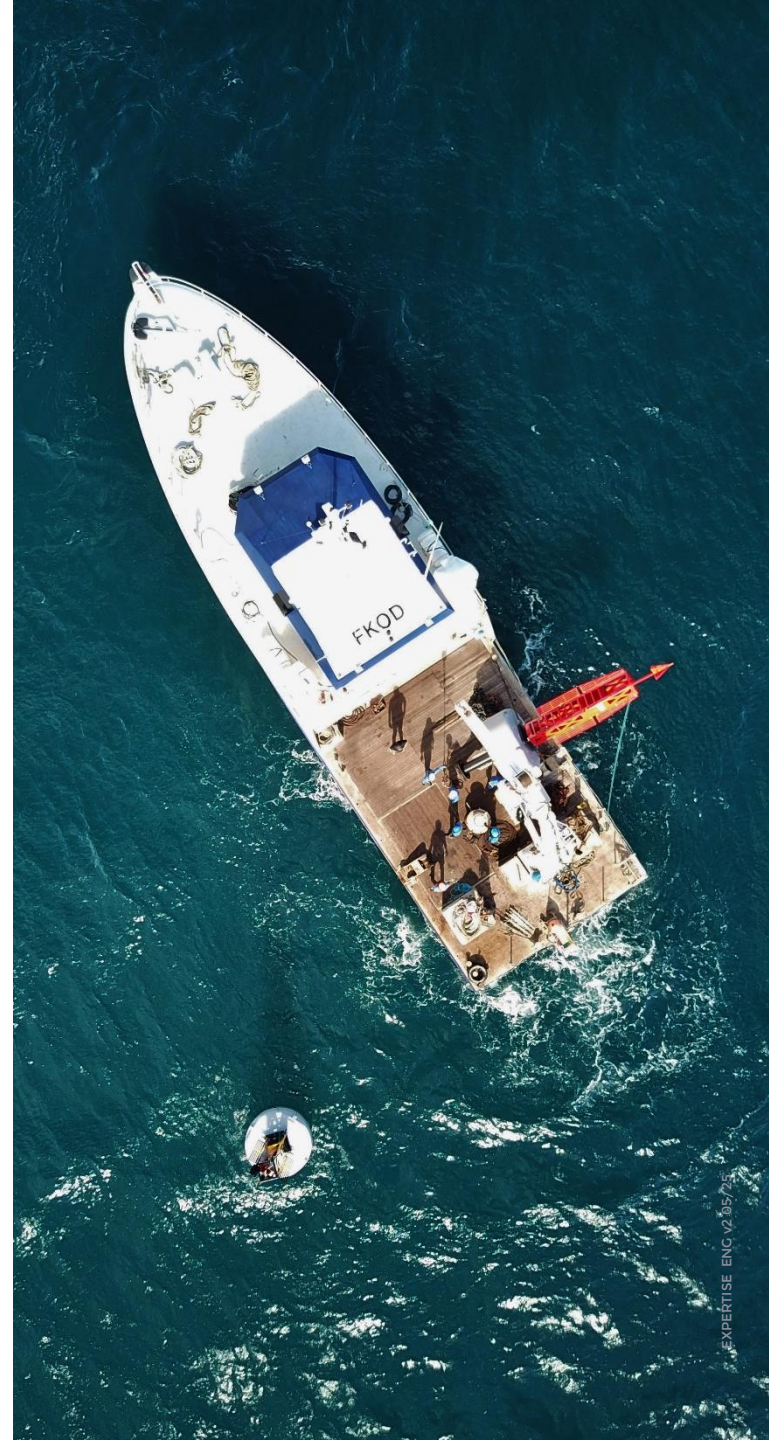
-----● Lighthouse Authorities

-----● Ports and Harbours

-----● International Contractors

-----● Oil and Gas Industry

-----● Offshore Wind Farms







# MARINE AIDS TO NAVIGATION





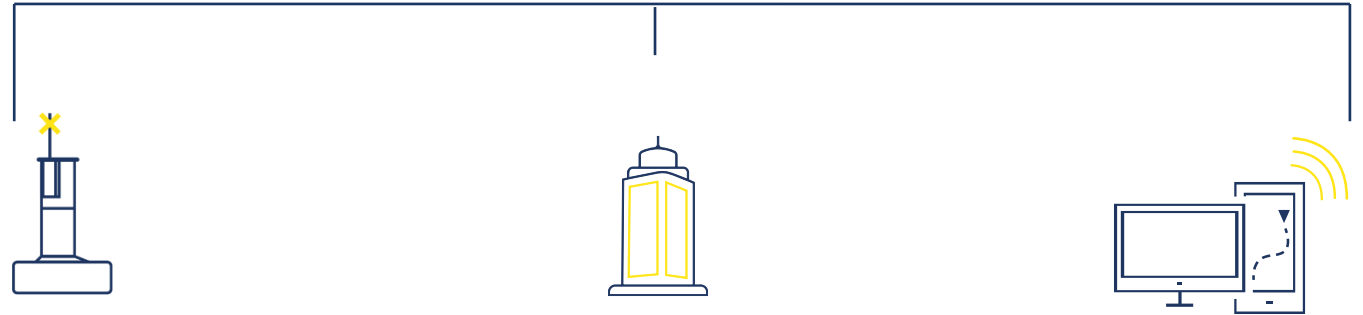
## SOLUTIONS

(designed and made in France)

**Polyethylene buoys from 0.9 up to 3.0m diameter,**  
**Fixed beaconing including lighthouse equipment,**  
**Mooring lines, towers, ...**  
**Connected LED lanterns,**  
**Remote monitoring and maintenance software.**

## GISMAN

A comprehensive range of effective  
and scalable AtoN solutions



FLOATING AND FIXED  
BEACONING



MARINE LANTERNS



REMOTE MONITORING  
MAINTENANCE SOFTWARE







# SAFE MARKING OF INLAND WATERWAYS



## SOLUTIONS

(designed and made in France)

## MARKING OF RIVERS AND LAKES, COMPLIANT WITH NATIONAL AND TRANSNATIONAL NAVIGATION CODES

### ● Floating Beacons

Safe marking of Inland Waterways

### ● Fixed beaconing

Safe marking on river banks,  
harbours and bridges







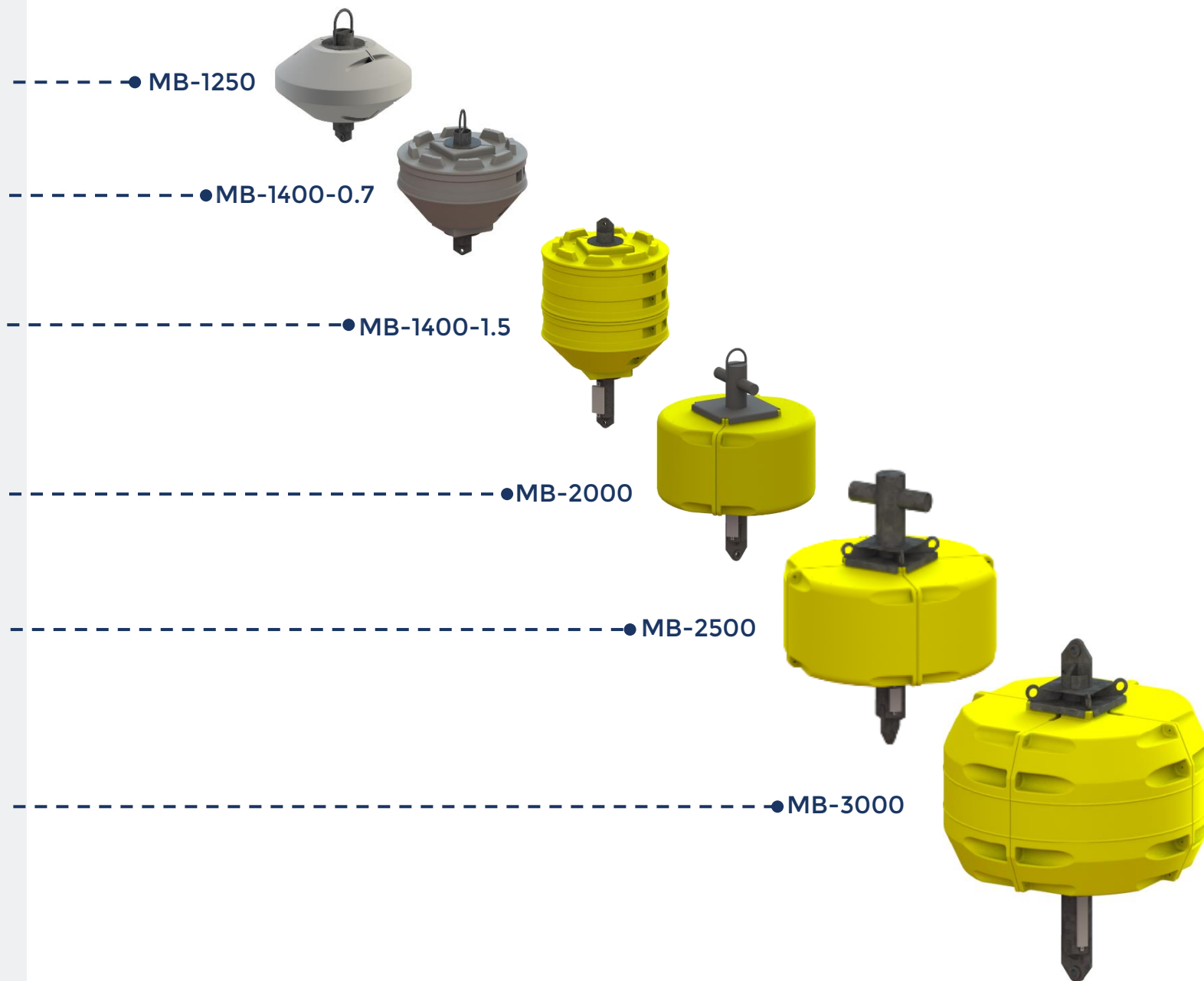
# MOORING BUOYS



## SOLUTIONS

(designed and made in France)

From 1250 to 3000mm diameter  
SWL from 5.5 à 150t







▲  
GISMAN  
▼

# REAL-TIME MONITORING BUOYS



## SOLUTIONS

(designed and made in France)

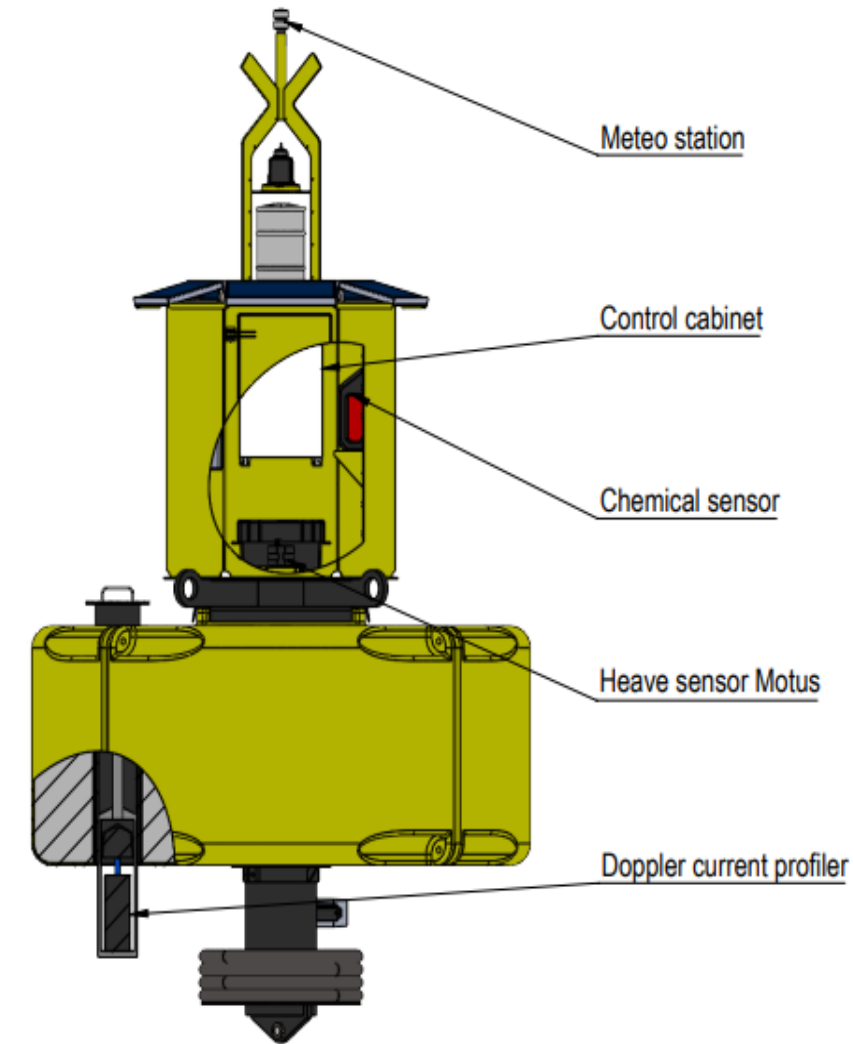
**Floats up to 3m diameter**



--● **Supervision 4G or iridium (option)**

--● **Data logger and transfer**

- Heave sensor Motus)
- Doppler current profiler ADCP
- Meteo station (Wind, Température, hygrometry)
- Chemical sensor
- Noise measurement (hydrophone)





**TAILORED SUPPORT**



## A TEAM TO PARTNER YOUR PROJECTS

Analysis and design of your AtoN's network

In-house design of tailored solutions

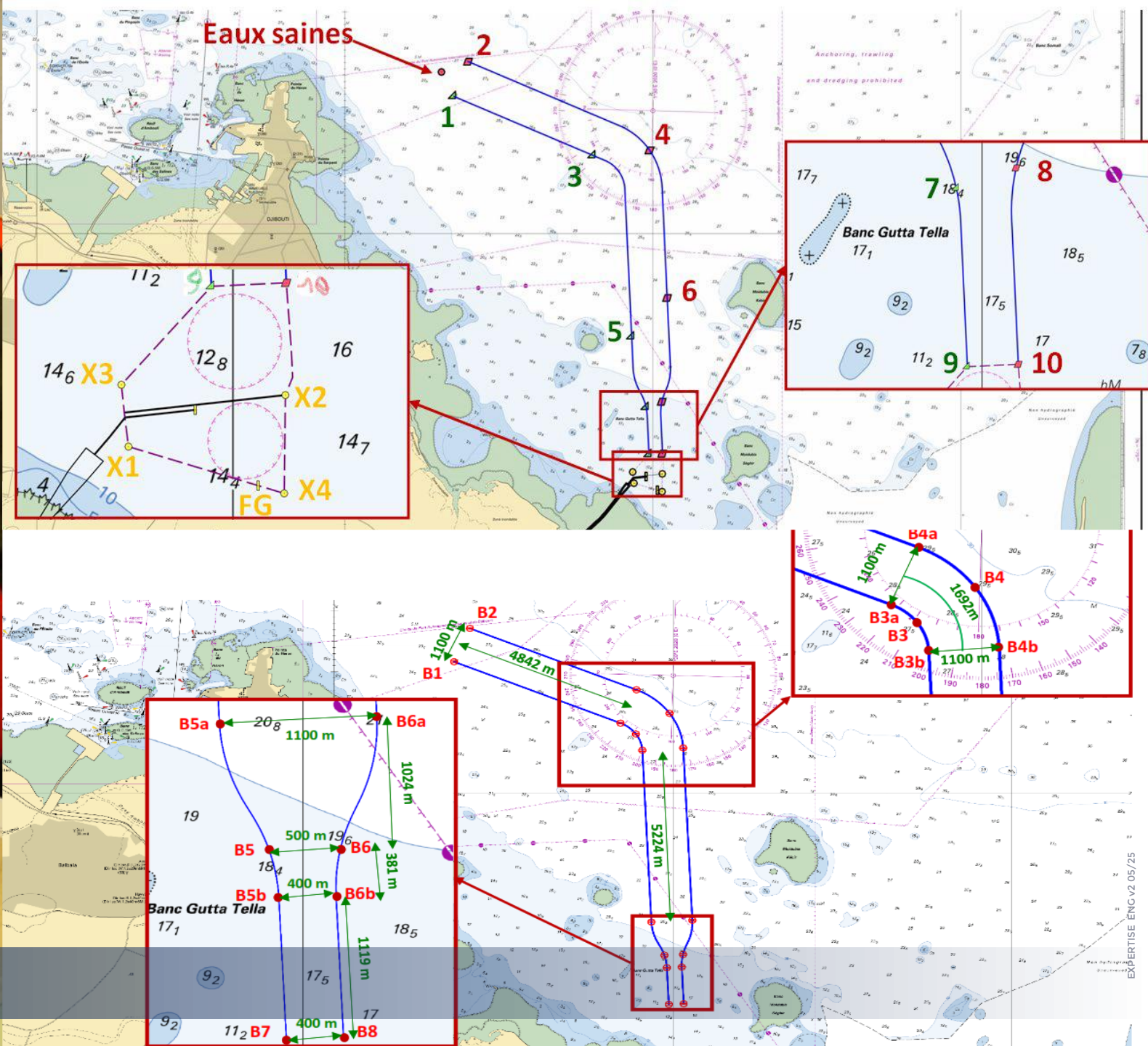
Manufacturing and supply from France

Installation and Commissioning

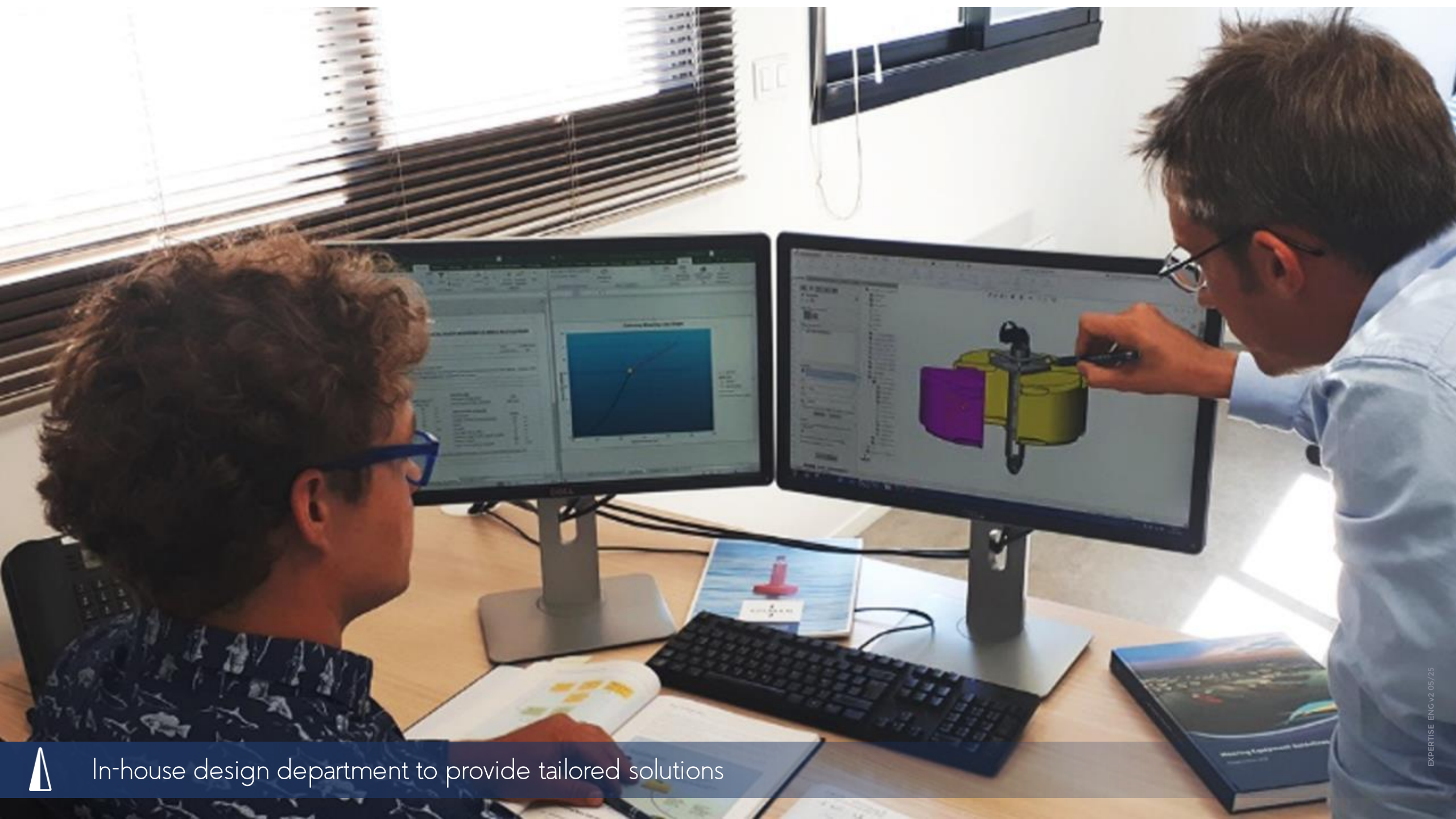
Staff skills development

After-sales servicing









In-house design department to provide tailored solutions





Manufacturing in France - Deliveries to all continents





Assistance to installation and commissioning by an experienced team of experts





Maintaining in operational conditions





Classroom and on-the-job training for staff skills development





**Your contact**

**Vincent ROGET**

**Sales Director**

**+33 (0)2 97 29 41 21**

**[vincent.roget@gisman.fr](mailto:vincent.roget@gisman.fr)**